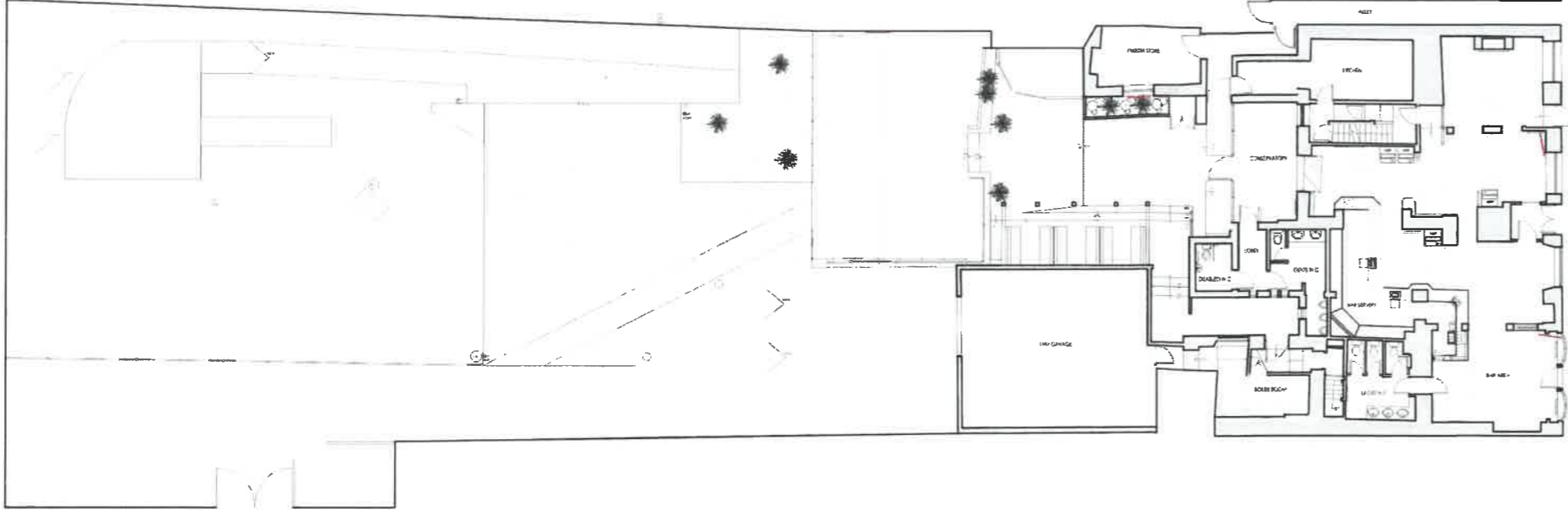
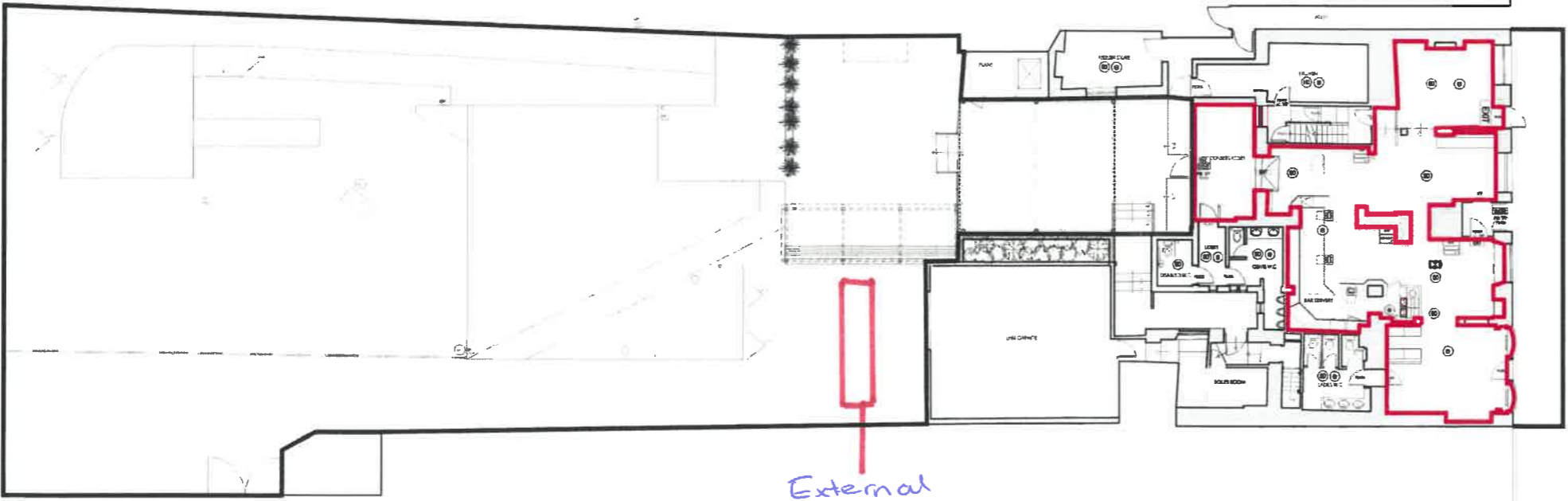


This drawing is the property of Mitchell Creative Group. Copyright reserved. It is not to be copied, reproduced or used in any way without the consent in writing of Mitchell Creative Group. All dimensions to be checked on site before commencement of any work or stage drawings. It is to be read in conjunction with the specifications when making.



EXISTING GROUND FLOOR PLAN
SCALE 1:100

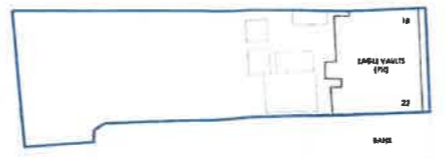


PROPOSED GROUND FLOOR PLAN
SCALE 1:100

External Bar



LOCATION PLAN
SCALE 1:1250



BLOCK PLAN
SCALE 1:500

- FIRE SAFETY PROVISIONS**
1. ALL FIRE EXISTING DOORS AND PARTITIONS TO BE IN ACCORDANCE WITH BS 474 PART B.
 2. FLOOD DOORS TO BE FITTED WITH SHOCK HEADS TO COMPLY WITH BRIDGE PRESERVATION TEST IN BS 474 SECTION 3.1.
 3. FIRE ALARM SYSTEM TO COMPLY WITH BS 5839 PART 1.
 4. EMERGENCY LIGHTING INSTALLATION TO COMPLY WITH BS 5266 PART 1.
 5. PHOTO LUMINESCENT SIGNS TO COMPLY WITH BS 5399 PART 2. ILLUMINATED FIRE EXIT SIGNS TO COMPLY WITH BS 5399 PART 3 & CONTRASTED IN ACCORDANCE WITH BS 4343 PART 101.
 6. FIRE FIGHTING EQUIPMENT TO COMPLY WITH BS 5266.
 7. FIRE SAFETY SIGNS & HORSES TO COMPLY WITH EC SAFETY SIGNS DIRECTIVE 1956 C.
 8. WALL & CEILING FINISHES TO BE CLASS 1 SURFACE SPREAD OF FLAME IN PUBLIC AREAS AS DEFINED IN BS PART 7. ALL CEILING FINISHES TO Satisfy ROUTE TO BE CLASS 1 SURFACE SPREAD OF FLAME IN ACCORDANCE WITH BUILDING REGULATIONS PART 8.
 9. UNPOLISHED FURNITURE TO SATISFY IGNITION SOURCE 2 (COMPOSITE STEEL, STAINLESS STEEL & STAINLESS STEEL IGNITION SOURCE 3 AS DEFINED IN BS 5839 PART 1).
 10. FABRICS TREATED WITH FLAME RETARDANT TO BE SUBMITTED TO WATER SOAK TEST AS DEFINED IN BS 5839. INDEPENDENT CERTIFICATION OF THE ABOVE STANDARD TO BE PROVIDED BY AN ACCREDITED TEST ORGANISATION.
 11. CURTAINS AND DRAPES TO SATISFY FIRE B PERFORMANCE REQUIREMENTS AS DEFINED IN BS 5839 PART 2.
 12. ARCHITECTURAL MOLDINGS AND OTHER DECORATIVE FEATURES TO BE FIRE RESISTANT TO THE SATISFACTION OF THE FIRE AUTHORITY.
 13. VERTICALLY HANGING TEXTILES TO BE IGNITION TESTED TO BS 4790 PART 2.
 14. TEXTILE FLOOR COVERINGS TO BE IGNITION TESTED TO BS 4790 PART 2.
 15. ALL INTERNAL WALL AND CEILING LOCATED TUBER FEATURES AND BUSHINGS TO BE TREATED WITH INSULANT COMING TO ACHIEVE CLASS 1 SPREAD OF FLAME IN ACCORDANCE WITH BUILDING REGULATIONS PART 8.
 16. STRUCTURAL BEAMS SUPPORTING FIRST FLOOR/SECOND FLOOR CONSTRUCTION TO BE TREATED WITH FIRE RESISTANT CLADDING TO ACHIEVE 1 HOUR FIRE RESISTANCE IN ACCORDANCE WITH BS PART 21 AND BUILDING REGULATIONS PART 8.
 17. STRUCTURAL STEELWORK SUPPORTING ROOF STRUCTURE TO BE PROTECTED TO 1 HOUR FIRE RESISTANCE IN ACCORDANCE WITH BS 474 PART 21 & BUILDING REGULATIONS PART 8.
 18. SIGNS TO BE DISPLAYED ON ESCAPE ROUTES AS FOLLOWS:
FIRE EXITS - FIRE EXITS (WITH SWIT)
FIRE EXITS - FIRE EXITS (WITH SWIT)
SECURITY DOORS - DOORS TO BE SECURED OPEN WHEN PROVIDED IN USE.
19. INSTRUCTIONS TO STAFF IN CASE OF FIRE HORSE TO BE PROVIDED.
20. DURING HOURS OF OPERATION THE EXISTING EXIT 1 AND EXISTING EXIT 2 DOOR, EXISTING DOORS AT BOTTOM OF STAIRS AND SHELTER LOBBY TO BE OPERATED BY A SINGLE ACTION AND WITHOUT THE USE OF A KEY.
21. PRIMARY LIGHTING SHOULD BE PROVIDED TO ILLUMINATE THE EXISTING ESCAPE ROUTE IN ACCORDANCE WITH THE FIRE AUTHORITY.

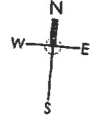
Key	Description
(D)	Area to be covered by non-proprietary emergency luminaires (see 2.14)
(M)	Area covered by halon/lithium detector (see 2.14)
(S)	Manual call point (see 2.14)
(PB)	Push bar or single action lockers to be provided where the premises is used
(VP)	Vision panel
(*)	Area covered by water warning indicator & sounder of high range (see 2.14)
(EXIT)	Fire alarm horn/annunciator (see 2.14) or fire alarm horn/annunciator (see 2.14) or fire alarm horn/annunciator (see 2.14)
(FMS)	Fire alarm horn/annunciator (see 2.14) or fire alarm horn/annunciator (see 2.14) or fire alarm horn/annunciator (see 2.14)
(IC)	Self-closing - covering back to be provided to 200mm to comply with Building Regulations 2010, 4.4
(F)	Fire alarm panel
(A)	Fire extinguisher: Aqueous film forming foam / Foam type
(A)	Fire extinguisher: water type
(A)	Fire extinguisher: dry powder
(A)	Fire extinguisher: carbon dioxide gas
(A)	Fire extinguisher: wet chemical
(S22)	Area to be securely locked open which members of the public use on the premises
(S)	Sign Fire Exit (see 2.14) to BS 5399



GENERAL NOTE
Items shown on this plan which are not required by the Plans Regulations are for illustrative purposes only, and do not form part of the licence. These items may be moved at the discretion of the Licence Holder. The current location of the fire safety equipment and other safety equipment is as shown. These items may be moved from time to time with agreement of the Fire Officer or after fire risk assessment.

	EXISTING	PROPOSED
EDA (SQ M)	125 sqm	127 sqm

Note: EDA includes toilets, toilets & bar area



C	X
B	X
A	X

REVISION

Mitchells & Butlers
27 Fleet Street
Birmingham
B3 1JP
Tel: 0121 499 4000
www.mbutlers.com

CREATIVE GROUP
Studio 10 First Floor Offices
17 Market Street, Lichfield, Staffordshire, WS13 3AH
t: 01827 25660
www.hunterpollardcreativegroup.com

Client	MITCHELLS & BUTLERS		
Job	EAGLE VAULTS		
Address	18 MARKET SQUARE WHITNEY OXON		
Title	LICENSING PLAN		
Drawn	KS	Scale	1:100 @ A0
Date	JAN 19		
Proj No	2082	Dwg No	50